



home

Quick Start Guide



welcome home

ClickView Home delivers streaming digital video in an internet friendly format to teachers and students at home. ClickView Home makes every digital video in your collection accessible to your students, ANYWHERE, ANY TIME.

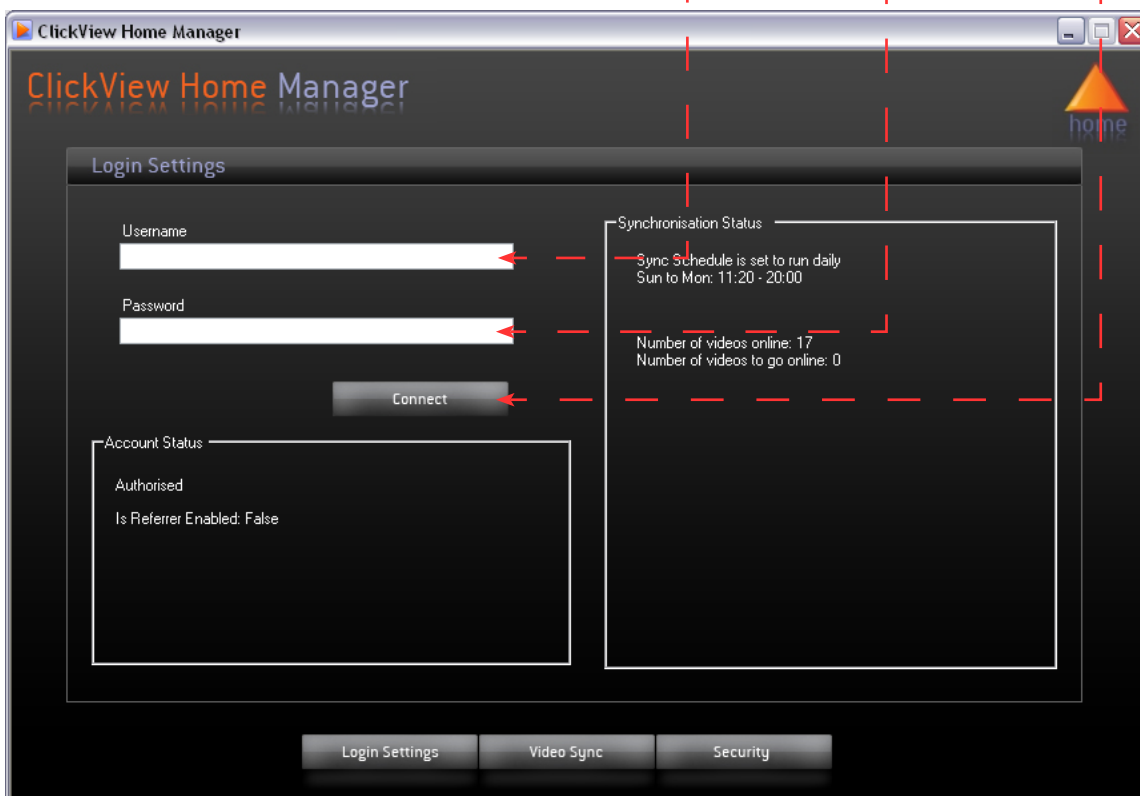
Most importantly, ClickView Home integrates seamlessly with your Learning Management System. This guide will help get you up and running with ClickView Home today.

Step 1: Upgrade

Upgrade your ClickView Library Server, ClickView Library Manager and ClickView Player(s) to 1.6.4
The upgrades are available on the ClickView Downloads page > www.clickview.com.au/downloads

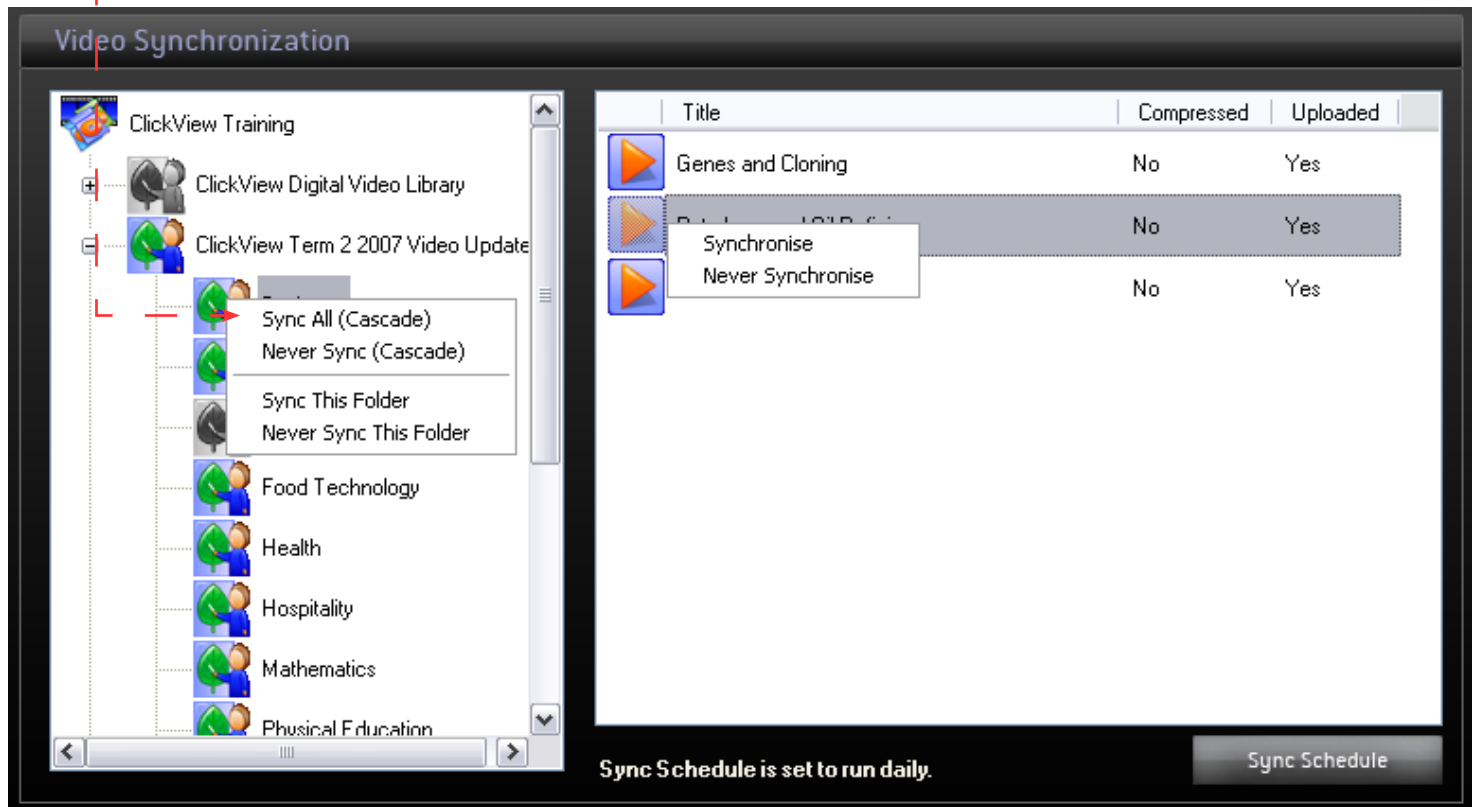
Step 2: Connect

Open your **ClickView Library Server** application. Click on the **Tools** menu, then choose **ClickView Home Manager**.
In the **Login Settings** area, enter your ClickView Home **username** and **password** and click **Connect**.



Step 3: Sync & Play!

Click on **Video Sync**. Right-click on the video folders you want to make available as ClickView Home videos and choose **Sync All (Cascade)**.



Click on **Schedule Sync**. Set a start and end time for Video Synchronisation and click **Start**.



Need help with ClickView Home?

Visit the online help centre:

www.clickview.com.au/home/help

Find out:

- ClickView Home features
- How to use ClickView Home
- Video Synchronisation
- How to integrate ClickView Home with your LMS, Website or Intranet
- and lots more!

OR contact ClickView Head Office

Phone: +61 2 9518 5165

Email: support@clickview.com.au